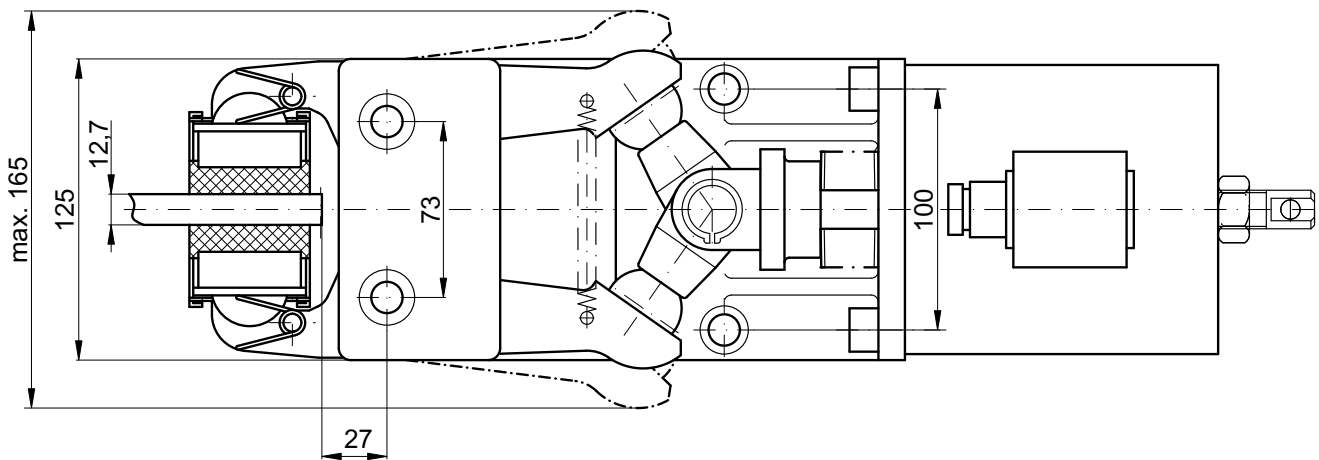
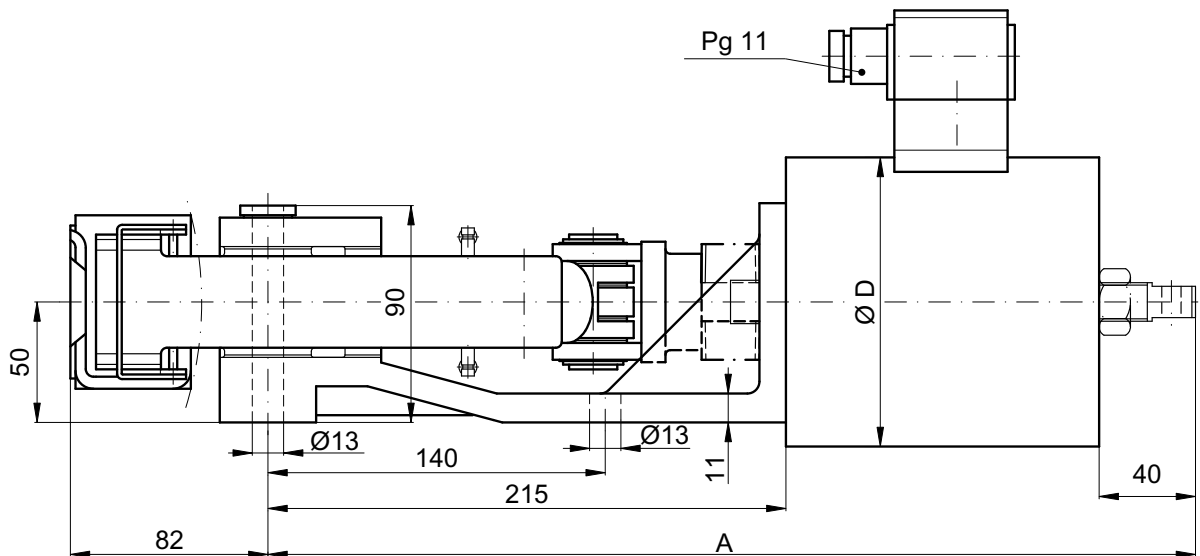


2D-drawing and dimensions see pg. 2

Type	Part-No.:	D (mm)	A (mm)	weight (kg)	Power (W)	I max. (A)	Disc Diameter							
							200	250	300	350	400	460	515	610
EMS 120	11251	120	385	21	52	0,25	Dynamic braking torque (Nm)							
EMS 140	11252	137	410	27	80	0,39	40	55	70	90	105	120	135	160
EMS 170	11253	165	443	40	95	0,46	75	100	125	155	180	215	240	280
EMS 170 S	11700	165	443	40	280/70	1,35/0,68	130	175	220	275	320	370	420	490
							220	290	360	430	510	590	670	780

Subject to change without notice.



Insulation protection: IP 65

Operating duty: 100 % ED

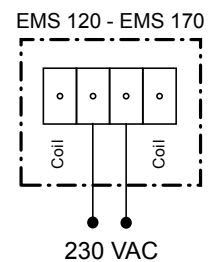
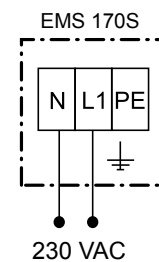
Power supply: 230 VAC, 50/60 Hz (others on request)

Operating cycles: EMS 170 S max. 240 per hour

Brake application: 600 ms for EMS 120 - 170 / 180 ms for EMS 170 S

Brake release: 350 ms

Ambient temperature: 40° C



Subject to change without notice.

**NOTE:**

Ask for customized solutions!



2D-drawing and dimensions see pg. 2

Nominal disc diameter [mm]							
350	400	460	515	610	710	810	915
dyn. braking torque [kNm] (static torque = dyn. torque x 0,9)							
1410	1660	1960	2230	2700	3200	3700	4220

**Power supply:**

Standard: 380-420 VAC 50 Hz / 440-480 VAC 60 Hz

Power consumption: 0,3 kW

Operating cycle: max. 30/min.

Brake release: 150 ms

Brake application: 70 - 100 ms

**Control voltage:**

Solenoid valve: 24 VDC, 26 W

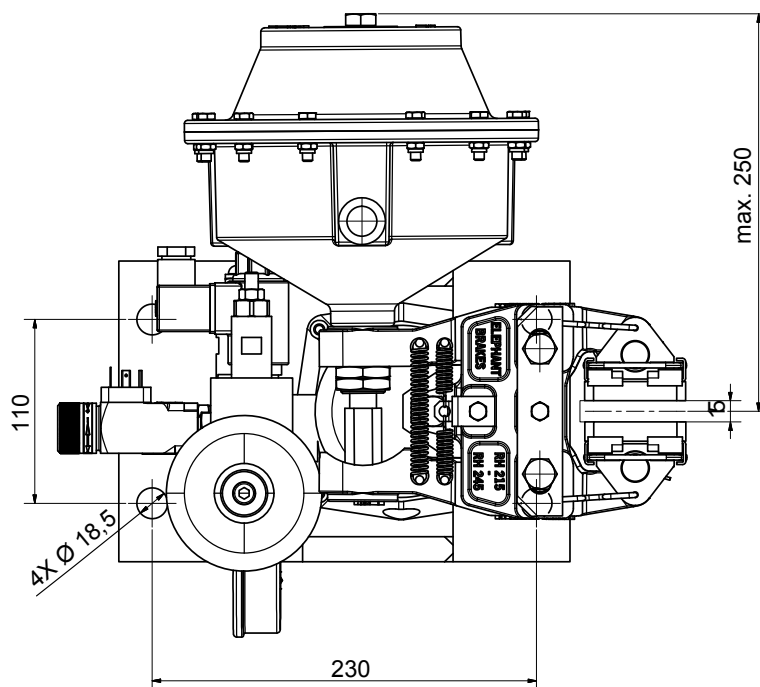
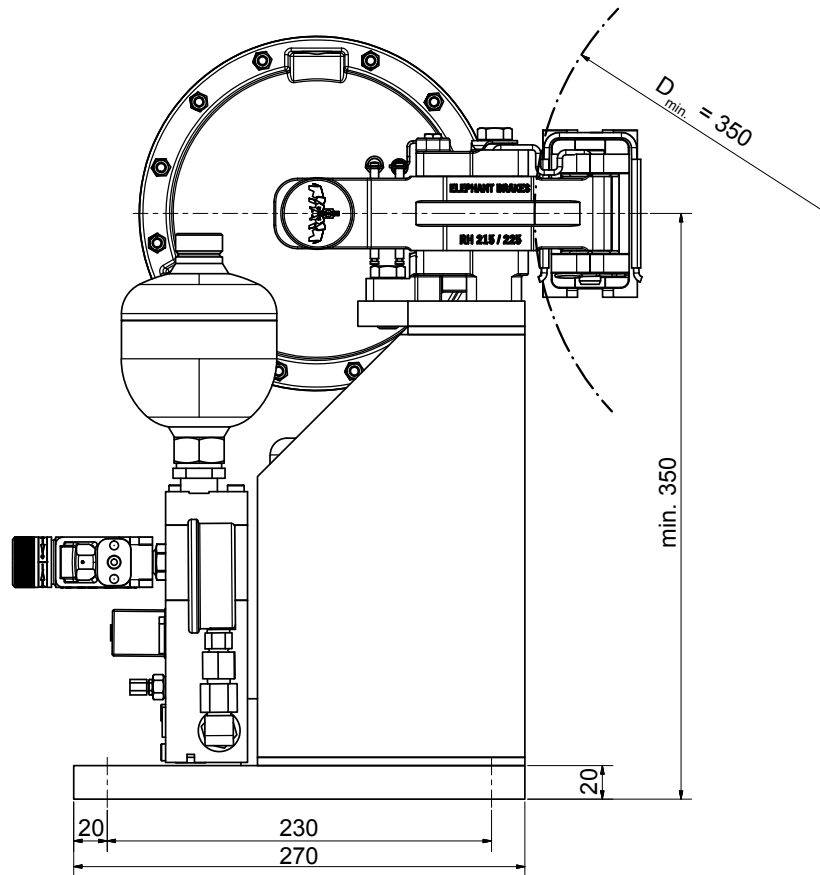
alternatively: 230 VAC, 26 W

Insulation protection: IP 54

Subject to change without notice.

**Elephant Brakes by Rietschoten Germany. Strong like an elephant. Smart like an elephant.**

Deutsche van Rietschoten & Houwens GmbH · Junkersstraße 12 · 30179 Hannover · [www.elephantbrakes.com](http://www.elephantbrakes.com)



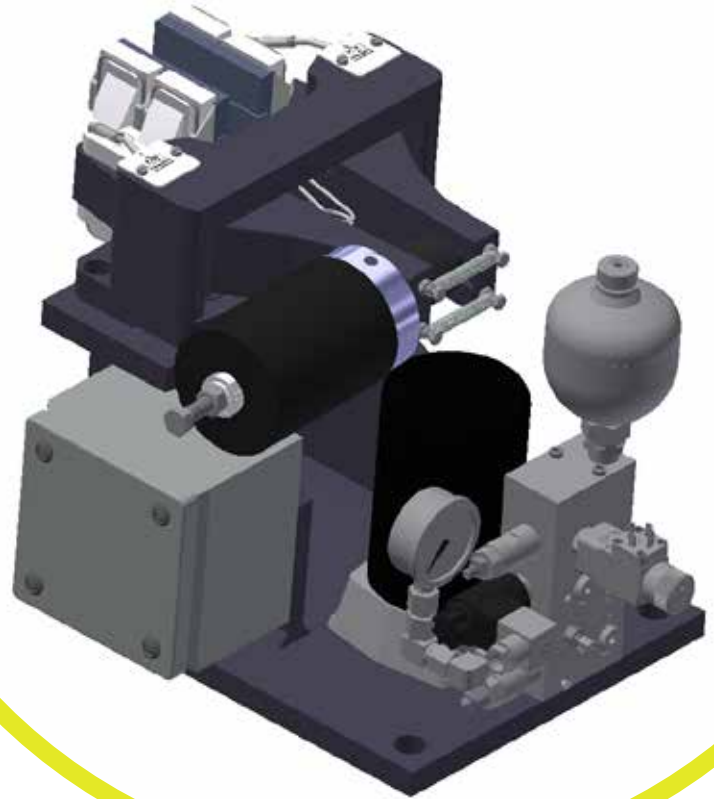
Subject to change without notice.

**Elephant Brakes by Rietschoten Germany. Strong like an elephant. Smart like an elephant.**

Deutsche van Rietschoten & Houwens GmbH · Junkersstraße 12 · 30179 Hannover · [www.elephantbrakes.com](http://www.elephantbrakes.com)

**NOTE:**

Ask for customized solutions!



2D-drawing and dimensions see pg. 2

Type	Part-No.	Nominal disc diameter [mm]							
		560	630	710	800	900	1000	1250	1600
		<b>dyn. braking torque [kNm] (static torque = dyn. torque x 0,9)</b>							
R&H 300.551.04	50933	1880	2120	2445	2815	3230	3620	4610	6010
R&H 300.552.04	50436	2810	3160	3650	4210	4810	5400	6885	8970
R&H 300.563.04	50437	3790	4265	4930	5680	6460	7300	9300	12105

Power supply:

Standard: 380-420 VAC 50 Hz / 440-480 VAC 60 Hz

Power consumption: 0,3 kW

Operating cycle: max. 30/min.

Brake release: 150 ms

Brake application: 70 - 100 ms

Control voltage:

Solenoid valve: 24 VDC, 26 W

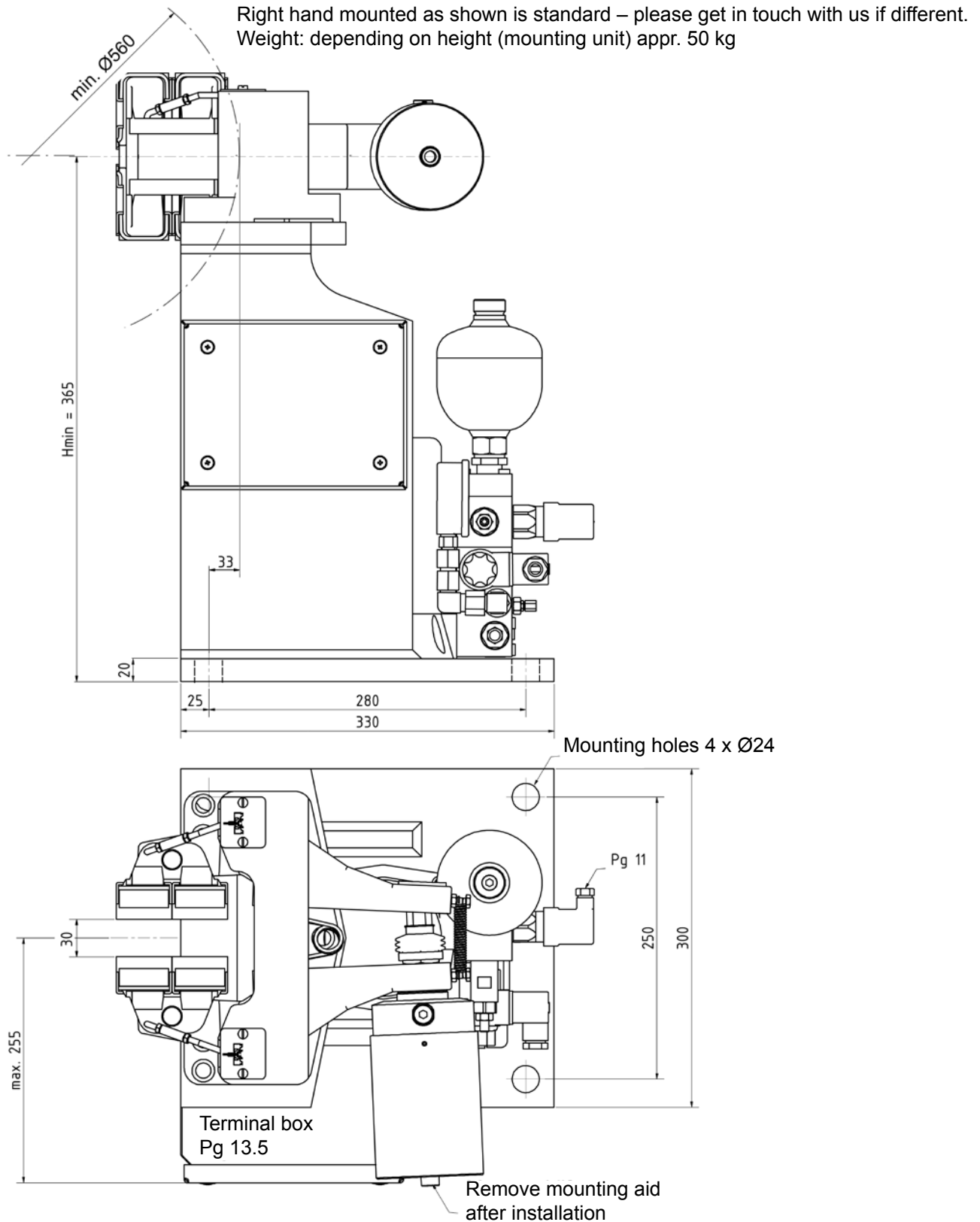
alternatively: 230 VAC, 26 W

Insulation protection: IP 54

Subject to change without notice.

**Elephant Brakes by Rietschoten Germany. Strong like an elephant. Smart like an elephant.**

Deutsche van Rietschoten & Houwens GmbH · Junkersstraße 12 · 30179 Hannover · [www.elephantbrakes.com](http://www.elephantbrakes.com)



Subject to change without notice.